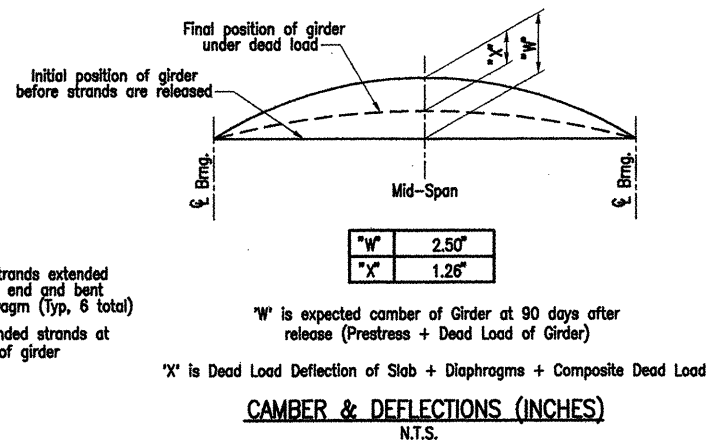
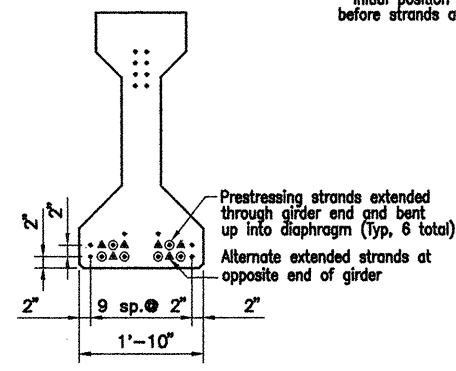
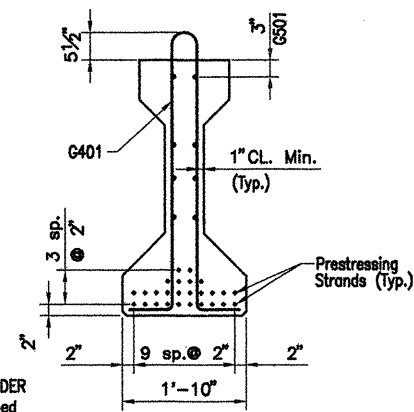
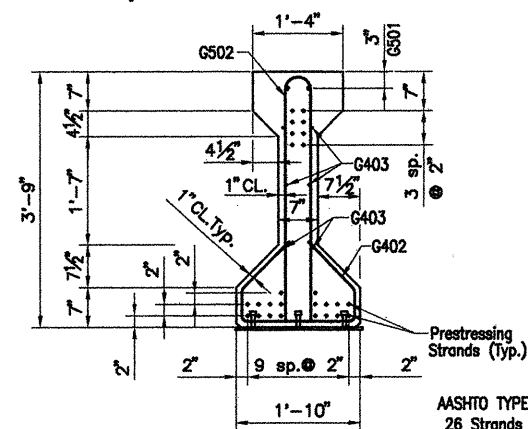
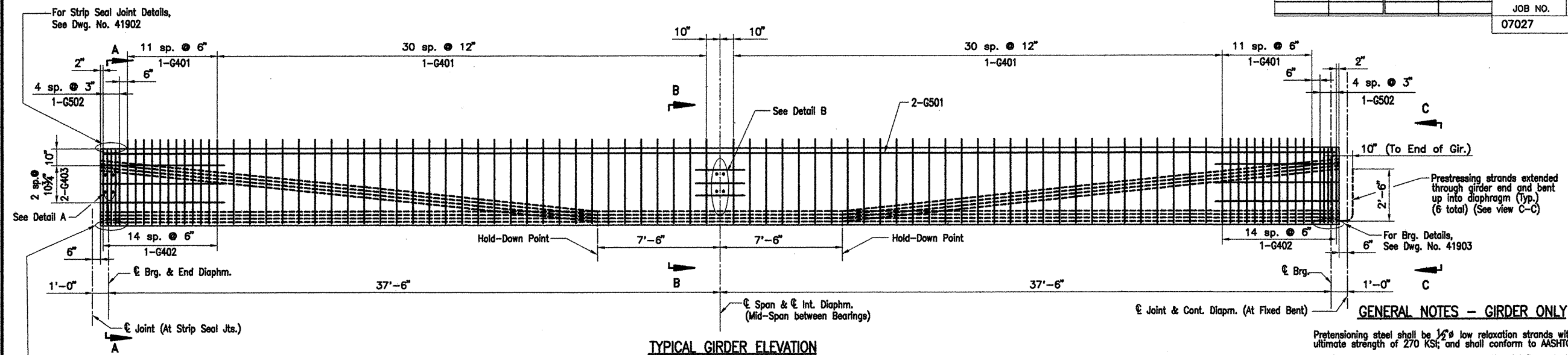


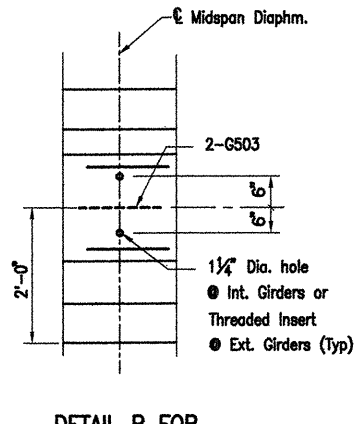
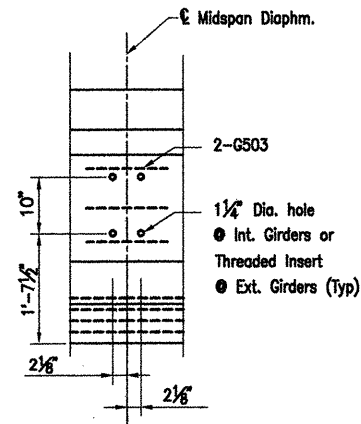
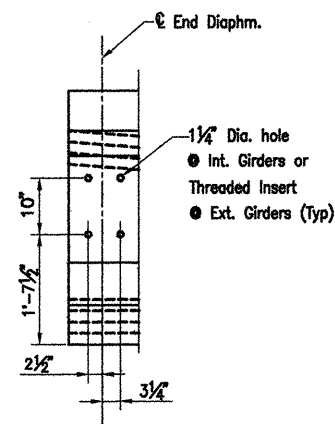
DATE REVISED	DATE FILMED	DATE REVISED	DATE FILMED	FED. ROAD NO.	STATE	FED. AID PROJ. NO.	SHEET NO.	TOTAL SHEETS
					ARK.			
				JOB NO.		110503	96 233	
				07027		308' UNITS	41901	



BAR LIST-PER GIRDER

Mark	No. Req'd	Length	P.D.
G401	84	9'-5"	2"
G402	30	4'-7"	2"
G403	12	7'-6"	STR.
G501	4	39'-0"	STR.
G502	10	7'-4"	3 1/2"
G503	6	2'-0"	STR.

Note: 2 - $\frac{1}{2}$ " dia. strands stressed to 2000 lbs. min. may be used in place of G502.



ALTERNATE NO. 1
WHITE RIVER RELIEF BRIDGE
DETAILS OF 308'-0" CONT.
PRESTRESSED CONCRETE GIRDER UNITS
(SHEET 7 OF 7)

ROC ROE & WHITE RIVER RELIEF
STRS. & APPRS. (CLARENDON) (F)
MONROE COUNTY

ROUTE 79 SEC. 13

ARKANSAS STATE HIGHWAY COMMISSION
LITTLE ROCK, ARK.

Engstrom/Modjeski and Masters



BRIDGE ENGINEER

DRAWN BY: YO DATE: Sept. 07
CHECKED BY: JES DATE: Nov. 01
DESIGNED BY: YO DATE: Nov. 01
BRIDGE NO. 07027 DRAWING NO. 41901